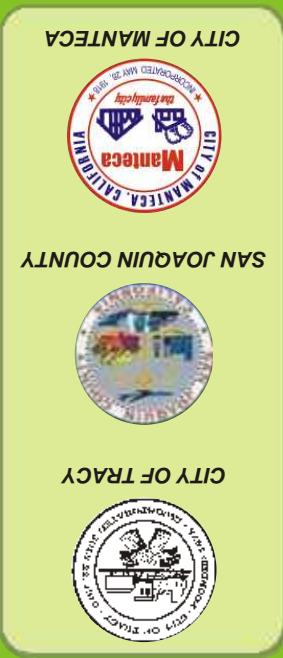


“ The City of Tracy shares the concerns of many small businesses about the rising cost of energy and the impact these costs have on your livelihood. In order to demonstrate our concern, we have decided to take part in a state-funded, energy savings outreach program so that together we can make some positive changes towards true energy efficiency. ”

- Dan Bilbrey, Mayor of the City of Tracy



California consumers are not obligated to purchase any full service, or other service not funded by this program. This program is funded by California utility ratepayers under the auspices of the California Public Utilities Commission (CPUC).



- www.pge.com
- www.sce.com
- www.flexyourpower.com
- www.energy.gov/efficiency/index.htm
- www.consumerenergycenter.org
- www.energystar.gov

Know more about energy efficiency from:

care for

energy

if you care for

dollars



WANT TO KEEP YOUR WALLET HEALTHY? Follow these Tips

Office Equipment

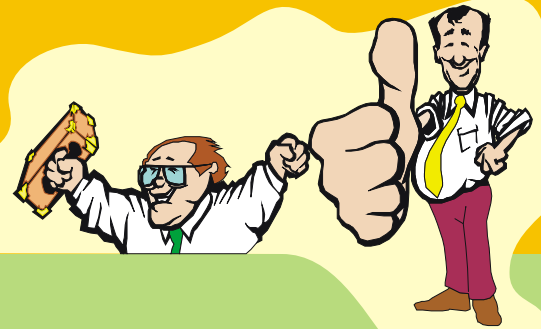
- Turn off PCs, monitors, printers, copiers, and lights every night and every weekend. If you can't turn off the whole computer, turn off the monitor and the printer.
- When purchasing PCs, monitors, printers, fax machines and copiers, consider ENERGY STAR® models that "power down" after a user-specified period of inactivity.
- If appropriate, use laptop computers - they consume 90 percent less energy than standard desktop computers.
- If appropriate, use ink-jet printers - they consume 90 percent less energy than laser printers.
- Implement paper-reducing strategies such as double-sided printing and reusing paper.
- Use e-mail instead of sending memos and faxing documents.
- Purchase appropriately sized copiers for your company's needs.

Lighting

- Retrofit T12 lights with magnetic ballasts to T8 lights with electronic ballasts.
- Retrofit incandescent light bulbs with compact fluorescent lights.
- Consider removing excess fluorescent lights and installing reflectors.
- Install motion detectors to control lighting in frequently unoccupied areas, such as restrooms and copy rooms.
- Retrofit incandescent or fluorescent exit signs with long-lasting, low-energy LED exit signs.
- Clean dusty diffusers and lamps every 6-12 months for improved light output.
- Rewire restroom fans to operate with the lights.
- Remember that dark walls require more power to produce the same amount of light.

Refrigeration

- Perform scheduled maintenance on units.
- Keep evaporator coils clean and free of ice build-up.
- Adjust door latches and replace worn door gaskets.
- Use night covers on display cases.
- Disconnect anti-condensate heaters.
- Keep refrigerators full (water jugs make good fillers).
- Install auto door-closers and strip curtains on walk-in freezers or coolers.



HVAC

- Consider replacing old HVAC systems with new energy-efficient systems.
- Install time clocks or setback-programmable thermostats to maximize efficiency.
- For optimal energy savings, set thermostats at 78° F for cooling in the summer and 68° F for heating in the winter.
- Install locking covers on your thermostats to prevent employee tampering with temperature settings.
- Perform scheduled maintenance on units including cleaning condenser coils, replacing air filters regularly, and checking ducts and pipe insulation for damage.
- Clean condenser coils and replace filters regularly.
- Install ceiling fans, blinds, or solar screen shades to cool the office.
- Close shades or blinds during early morning and late evening to reduce solar insulation heat gain.
- Install reflective window film, or awnings on all south-facing windows.
- Consider installing an air conditioning economizer to bring in outside air when cool outside.
- Install ceiling and wall insulation.
- Insulate water heaters and supply pipes.

Food Service Equipment

- Consider replacing some or all electric cooking equipment with comparably sized gas-fired equipment.
- Purchase insulated cooking equipment whenever possible (e.g., fryers, ovens, coffee machines). Insulation maintains more heat in the equipment and transmits less to the environment.
- Preheat cooking equipment no longer and at no higher setting than the manufacturer's recommendation.
- Use cooking equipment to capacity. Fully loaded equipment utilizes energy more efficiently.
- Turn off backup fryers during low production periods.
- Filter fryer oil at least once a day to extend the oil life.
- Don't overload fryer baskets beyond the recommended capacity. Overloading increases cook time.
- Where applicable, replace broilers with grooved or smooth griddles to significantly reduce the associated energy consumption.
- Turn ovens down or off during low production periods.
- Make sure oven doors fit tightly and gaskets are in good condition.

ADDITIONAL ENERGY EFFICIENCY PROGRAMS for BUSINESSES:

Express Efficiency : Equipment rebates for specific pre-defined types of equipment. For more info, please contact **(800) 468-4743**, or see: http://www.pge.com/biz/rebates/express_efficiency/index.html

Standard Performance Contract (SPC) : The SPC program offers cash incentive payments for projects involving replacement of existing equipment or systems with new, high-efficiency equipment or systems. The program is open to projects involving commercial, industrial and agricultural customers. For more info, please contact **1-800-468-4743** or see: http://www.pge.com/biz/rebates/spc_contracts/index.html

New Construction Program : Pacific Gas and Electric Company offers non-residential building owners and design professionals a diverse portfolio of resources to support energy-efficient building design and construction. For more info, please contact **(415) 973-3803** or see: <http://www.pge.com/biz/rebates/>

California energy commission offers various rebate programs that can be accessed through www.energy.ca.gov

Targeted Energy Audit

For more information

Contact your local Pacific Gas and Electric Company division account representative, or call the Business Customer Center at 1-800-468-4PGE (4743).

On-Site Energy Audit

For more information

Contact your local Pacific Gas and Electric Company division account representative, or call the Business Customer Center at 1-800-468-4PGE (4743) to request a site energy survey.

Phone Energy Survey

For more information

Call the Pacific Gas and Electric Company Business Customer Center at 1-800-468-4PGE (4743), and get a phone survey of your facility right away.

Growing Business Success CD-ROM

For more information

Call the Pacific Gas and Electric Company Business Customer Center at 1-800-468-4PGE (4743), and receive your own Growing Business Success CD-ROM.